



St John



The frontline of care | Ambulance | Health | Air Rescue | Emergency Support | Public Safety

MEDICAL RESPONSE CATALOGUE



**When you buy from St John
100% of the proceeds help us
to save lives and improve
health care.**



Thousands of people trust St John with their lives every year

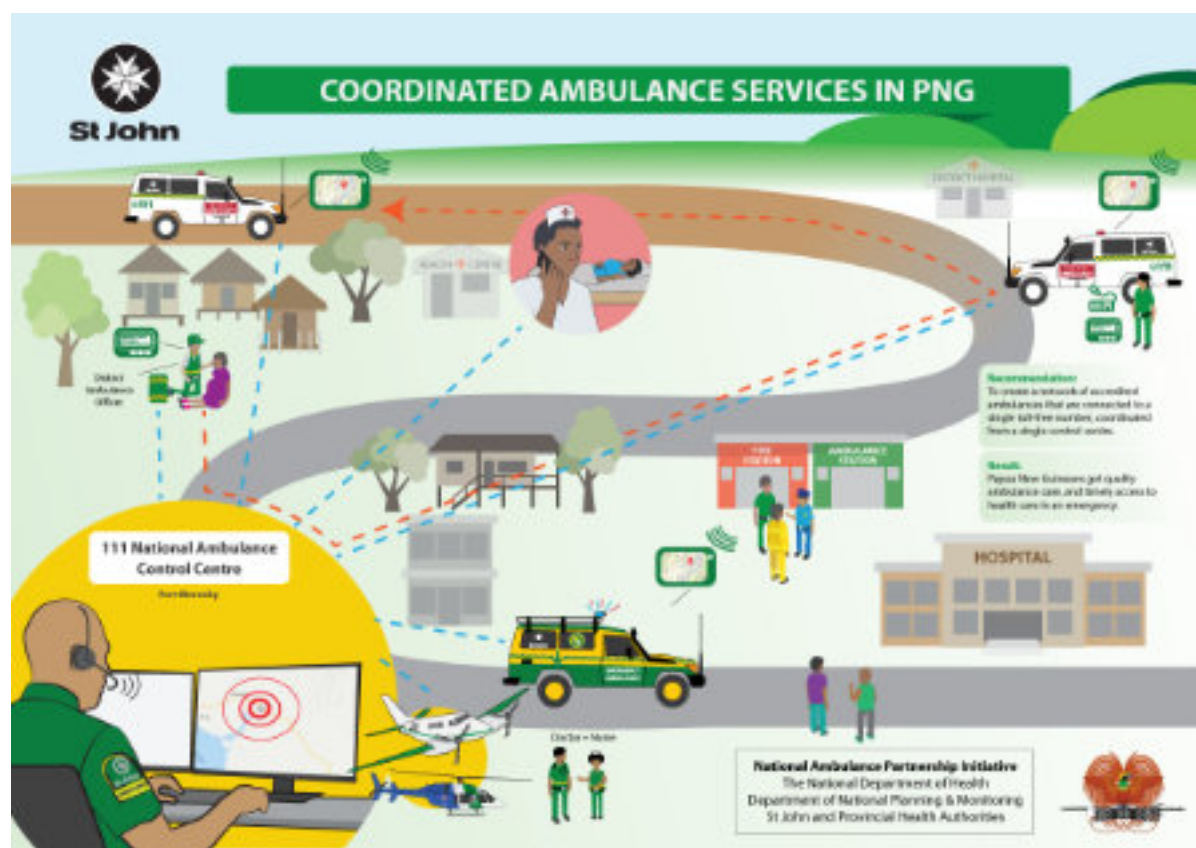
St John is at the frontline of health care, providing ambulance, medical, and rescue services across Papua New Guinea in people's time of need. We nurture resilient communities by ensuring free health education for people in schools and villages, and we promote safer health care by providing emergency medical life support training to doctors, nurses, and medical specialists in the public and private hospitals.

Our ambulance service serves the community, saves lives and helps sick and injured people access emergency health care 24 hours every day across the nation. St John's ambitious project is helping the government build a national prehospital care system to save more lives and assist the sick and injured to get reliable access to healthcare.

About St John

St John Papua New Guinea is a charitable, non-profit, health and public safety organisation operating as an annexe of government in accordance with the *St John Council Incorporation Act of 1976*.

We are building a national prehospital care system in partnership with the government. The system is saving lives and improving people's access to primary and emergency care.



Our Mission

We are committed to ensuring all people have trusted, reliable and quality healthcare when it is needed, wherever it is needed, whatever the circumstance.

We will pursue excellence in health education and the provision of essential medical services to prevent and relieve sickness and injury and improve people's health.



That illness, injury, and suffering are prevented or eased because first aid is a part of everyone's lives.



To provide responsive and resilient prehospital and primary health care across Papua New Guinea.



To reach the remotest corners of our country by air when people need help for maternal, neonatal or trauma emergencies.



To be the local medical service provider of choice for working families, business and industry.



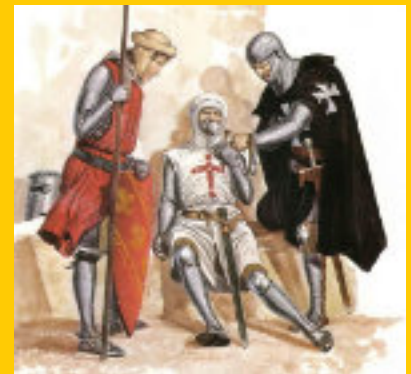
That the people of Papua New Guinea value St John as a trusted, dedicated and inimitable organisation.



St John is a local organisation that is part of the global Order of St John. We have been a part of **Papua New Guinea** since **1957**

When no one else can Where no one else will

For nearly 1,000 years St John continues to be a bastion for universal health care for all people, regardless of race, status, colour or creed. St John men and women uphold the values and traditions of over a hundred generations who have served humanity through health and humanitarian services.



St John will always stand firm in its mission to make health care universally accessible to people, because people need care and humanity deserves protection.



Your Survival is Our Business

From the time of injury, to the arrival at hospital, St John has every life-changing second covered.



Initial First Aid given by first aiders

First aid is started by members of public; their interventions help save lives in the first few minutes of an emergency situation.



Emergency Call Centre coordinates ambulance care

The 111 hotline helps people get immediate care and coordinates all ambulances and medical aircraft.



Emergency responders continue life saving first aid

Police and firefighters trained by St John give senior first aid at the scene, and render care until an ambulance arrives.



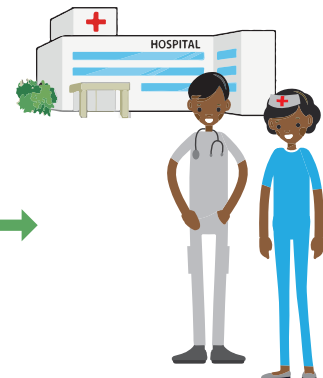
Ambulance officers arrive to initiate emergency medical care

Ambulance workers are able to give basic life support and emergency care to stabilise the patient and reduce discomfort and distress.



Advanced paramedical staff resuscitate and stabilise at the scene

Nurses, paramedics and doctors work on specialist ambulances to give advanced prehospital care to the ill and injured at the scene, increasing the patient's survival and comfort.



Life support trained hospital workers give the patient the best chance of survival and recovery

Ambulances take patients to the most appropriate health facility.

Sometimes ambulance professionals give definitive treatment at the scene, avoiding the need for hospital admission altogether.

By combining community first aid with our critical ambulance and essential medical services, we are making the communities we serve safer and happier for all people.

St John's integrated model of delivering health care with community-centred health education makes us unique in our ability to provide people with comprehensive prehospital, primary and essential health care around Australia, New Zealand, and the Pacific.



The public ambulances service is **FREE** for:



a life threatening emergency



a woman is giving birth or suffering a serious pregnancy complication



a child under 5 is suffering a serious illness



victim of violence



a person seriously injured in car accidents



snake bite

Free call 111 for emergency help

NCD

East New Britain

Morobe

Kundiawa

There is a small fee for all non-emergency care

Payment by EFTPOS only

Standard fee applies to non-citizens of Papua New Guinea

St John's ambulance services are not fully government funded. Government funding covers just a fraction of our ambulance service's operating cost. St John works tirelessly to raise money that subsidises the cost of affordable ambulance services for PNG citizens.

For more information visit www.stjohn.org.pg or email enquiries@stjohn.org.pg



St John

Ambulance Catalogue



Ambulance Professional Medical Kits



St John Professional Ambulance Medical Kits. Manufactured by Neann Australia



Emergency Care Kit

Code: 50-001-7538-0369



Thomas Insulated Drug Case

THOM-TT350



Ambulance First Responder Medicine Kit

Code: 50-001-7539-019



Ambulance Professional Medical Kits



St John Professional Ambulance Medical Kits. Manufactured by Neann Australia



Oxygen Resuscitation Kit (ORK)

Includes regulator and oxygen-powered Twin-O-Vac Suction
Code: FWE341



Paediatric Resuscitation Module (ORM)

Code 50-001-7536-0637



Childbirth & Neonatal Resuscitation Kit (CNR)

Code 50-001-7537-0422





MODELS

TYPE A / B: Professional St John Emergency Ambulance

A fully integrated ambulance designed to an international medical standard. Ships rescue ready, for the prehospital professional that needs to provide critical treatment and save lives every day. Designed and assembled in Australia.

- V8 Toyota Landcruiser troop carrier, 4WD with standard inclusions
- Rear passenger side door (left hand side)

TYPE C: Reservist Health Centre Ambulance

The absolute essentials to provide safe emergency care and patient transport in the rugged off-road environment. This ambulance is suitable for health centres and district hospitals. Designed and assembled in Papua New Guinea.

Extras

Recommended extras:

- St John Ambulance kits
 - Emergency Care Kit
 - Defibrillator Zoll AED 3
 - Oxygen Resuscitation Kit (ORK)
 - Adult Resuscitation Module (for ORK)
 - Paediatric Resuscitation Module (for ORK)
 - Childbirth & Neonatal Resuscitation Kit (CNR)
- HF long-range radio

Additional extras:

- Zoll X Series Monitor/Defibrillator
- Observation equipment pack:
- thermometer, sphygmomanometer, pulse oximeter, BGL, stethoscope)
- Paramedic medication kit
- Advance airway kit (for paramedics and doctors only)
- Insulated rapid sequence intubation drug case

AMBULANCE COMPARISONS

Item	TYPE C Reservist 4WD Ambulance	TYPE B Professional 4WD Ambulance	TYPE A Professional Intensive Care 4WD Ambulance
	V6 Toyota Landcruiser troop carrier, 4.2 4WD	V6 Toyota Landcruiser troop carrier, 4.2 4WD	V8 Toyota Landcruiser troop carrier, 4WD
Vehicle	<ul style="list-style-type: none"> ◦ full-spare tyre ◦ anti-lock braking system (ABS) ◦ central door locking with remote ◦ sub fuel tank ◦ snorkel ◦ towing hook ◦ winch (optional) 		
Fire Extinguisher	2x 1.0kg dry powder fire extinguisher securely stowed under driver and passenger seat		
IV hooks	IV hooks, rear of vehicle to hold 1L intravenous fluid bag		
Glove stowage	Securable	Compartment for box of gloves (100 gloves)	
Rear passenger door	No	No	Yes
Rear door	Swing-out-type backdoor with gas strut		
Electronics	Factory standard electronics	Dual battery system with isolation of ambulance equipment from LED lights and vehicle starting function. Power inverter 600W 12V D/C to 220V A/C	
Air conditioning	Front		Front and rear
Stretcher	Secure stretcher locking mount connected to chassis. Stretcher three-point seatbelt harness for patient.		
Windows	Tinted heat reflective film for windows in rear compartment		
Floor panelling	Hard flooring with heavy duty (hospital-grade) non-slip vinyl, with all edges waterproof sealed Floor mounted stretcher guides for stretcher where required		
Attendant seat	Shall include two-point harness at the minimum.	Forward facing attendant seat with inbuild 3-point harness	Forward facing attendant seat with inbuild 3-point harness
Wall panelling	Basic	Cabinetry, internal and external, powder coated aluminium	Cabinetry, internal and external, powder coated aluminium
Kit shelving	To suit St John NEANN ALS Ambulance kits. All items must be secured with a strap/custom seatbelt.		
Attendant Desk	Generic strap to secure defibrillator/monitor		
Medical Oxygen	2-cylinder mounts each, adjustable to fit medical oxygen 'C' and 'D' cylinders Piped oxygen with regulator for 1, 2, 3, 4, 6, 8, 10, 15Lpm oxygen		
Emergency Lightbar	Red/white LED roof mounted lightbar	Red/Blue roof mounted LED bar with rear red/blue LEDs on roof-rack, ensuring 360-degree coverage	Red/Blue roof mounted LED bar with rear red/blue LEDs on roof-rack, ensuring 360-degree coverage

AMBULANCE COMPARISONS

Item	TYPE C Reservist 4WD Ambulance	TYPE B Professional 4WD Ambulance	TYPE A Professional Intensive Care 4WD Ambulance
	V6 Toyota Landcruiser troop carrier, 4.2 4WD	V6 Toyota Landcruiser troop carrier, 4.2 4WD	V8 Toyota Landcruiser troop carrier, 4WD
Siren	100-Watt siren speaker		
Light & Siren control system	Dash mounted lighting/siren controls		
LED Lighting	LED rear work-light only	LED work lighting with flood beam for side and rear of vehicle illumination	
Extrication board	Standard spine-board / extrication-board that can be securely stowed in the vehicle.	Carbon-fibre spine-board (extrication-board) with 'lipped' sides for easy loading of patient onto board. Securable mount for supplied extrication-board. Straps for extrication board: chest, pelvis, knees, feet.	
Interior light	Interior LED light	LED interior strip light incorporated on/off switch accessible from rear attendant seat	
Eyeball light	N/A		Adjustable eyeball light for cannulation
Map light	N/A	N/A	Front passenger, and rear for attendant
Fuses and blocks and wiring	Required		
Seat covers	Heavy duty covers on all seats.		
Vehicle livery (decals)	3M reflective decals, Grade 1/2. <ul style="list-style-type: none"> • Checkers (green & yellow) along both sides of vehicle. • Chevrons covering at least 10% of rear/boot of vehicle. • Green cross on front bonnet and both driver and passenger door. 	3M mixed Grade 1 and 2 (diamond-grade) reflective decals front, side and rear customisable. Government and St John logos	
Modifications	Certified to Australian Design Rules or ISO / EU equivalent		
Shelving to secure medical kits	Generic	Shelving that is easy to access from rear door, with all items firmly secured.	

We're using



To quickly find you in an emergency



We can instantly locate you using your phone's GPS

Our dispatcher can hear and see you using your phone's camera



When you point the camera at the casualty's face, the software will automatically measure his heart rate and breathing. The dispatcher can see this on her computer screen.

The vital sign help her to assess how quickly you need an ambulance.

Embracing technology to save lives.

The GoodSAM Instant system is free. It works on any phone with an internet browser. You do not need to download an application.

How does it work? When you call 111 the call-taker may send you a SMS text message with a link. St John can only see your location and camera if you open the link and give permission. Once the call finishes, we can no longer see your location and cannot activate your camera or microphone.

By yourside 24/7





St John

IN AN EMERGENCY CALL 111

for St John Ambulance



Central Province Government



Morobe Provincial Government



(+675) 303 1000



www.stjohn.org.pg



Free Hotline



Ambulance



Air Ambulance



Medical Service



First Aid & Emergency
Response Training



Medial
Supplies
& Kits

For the Service of Humanity